

- elegant design
- available in two colors
- opening and closing the valve
- 868,0 ... 868.6MHz, several channels for redundancy, range up to 2000 m
- power supply - two CR123A batteries
- up to 3 years of service
- easy and fast installation



The device is designed to control actuated valve for water supply, irrigation, etc. or other external devices.

## Radio communication

MAKS Valve transceiver operates in several channels of 868.0 ... 868.6 MHz band for redundancy

Secure two-way radio communication.

Distance - up to 2000 m in the open space.

Three gradations of power, the maximum - up to 20 mW.

## Setting up

MAKS Valve operates only with the MAKS PRO wireless security system center, connection to other systems is not provided.

MAKS Valve is connected to the security center and configured using the MAKS Setup mobile application.



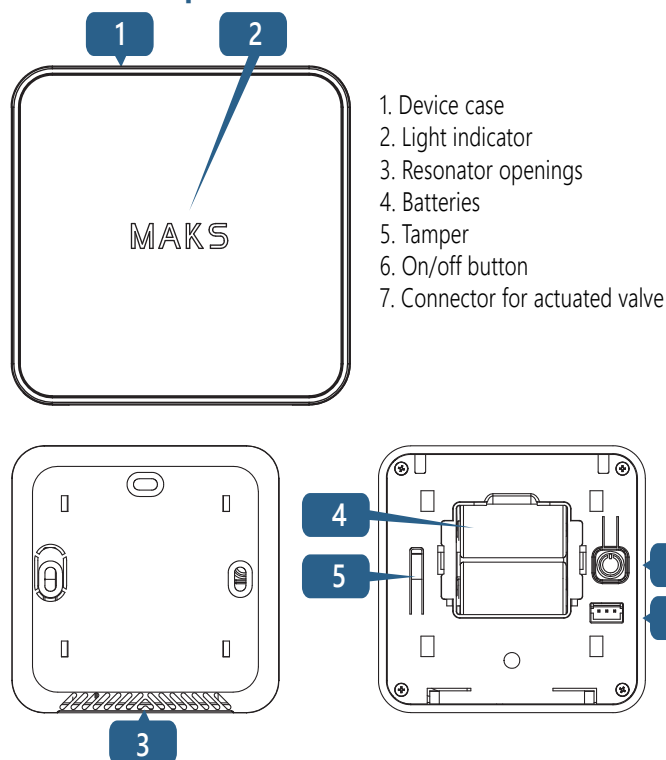
## Features

The delay for turning on or off an external device can be up to 10 seconds. The device detects and indicates troubles - faults opening and closing valve and breaking valve wire.

## Characteristics

ISM wireless interface, up to 2000 m	868.0... 868.6 MHz
secure two-way communication	key - 256 bits
Power (lithium batteries included)	two CR123A, 3V batteries
consumption in standby mode	no more than 5 $\mu$ A
radio consumption	no more than 35 $\mu$ A
consumption in "Switching valve" mode	no more than 600 $\mu$ A
service life of battery	up to 3 years
Operating temperature range	from -10°C to +55°C
Case color	white, black
Dimensions	84.5 x 84.5 x 24.3 mm
Weight	135 g
Connection to MAKS Valve	12V DC, cable length no more than 1.5 m

## Functional parts of the device



### Indication

**Standby mode** - indicator off

**Trouble** - light indicator is yellow 2 seconds and then flashes yellow

**Closing valve** - light indicator flashes red until valve closes

**Opening valve** - light indicator flashes green until valve opens

### Display in communication test mode

**Excellent connection** - LED indicator flashes green

**Satisfactory connection** - LED indicator flashes yellow

**Poor connection** - LED indicator flashes red

**No connection** - LED indicator flashes red quickly

*In test mode, the unit's radio transmitter operates at medium power.*

### Switching on and off

Press button **6** to switch on the device - the indicator will be on.

To turn off the device, press and hold button **6** for 3 seconds, until the light indication goes out.

### Registration and setup

1. Place the MAKS Valve at a distance of no more than 2 m from the MAKS PRO security center. Registration is run at a minimal possible power to avoid the influence of neighboring systems that can be being configured nearby.

2. Start the MAKS SETUP application

3. Follow the application instructions to connect to the MAKS Valve and start the registration of MAKS wireless devices

4. Turn on the MAKS Valve, after 10-20 seconds it will be registered

5. Set up a new device in your mobile application

## Installation and connection

Before installing the MAKS Valve, register it in the MAKS PRO and test the device signal level using the MAKS Setup app.

We recommend to install the device in the following order:

1. Selecting the installation location with the best signal
2. Mounting the rear plate (mount)
3. MAKS Valve installation

### Selecting the installation location

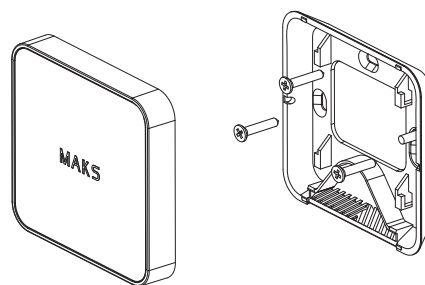
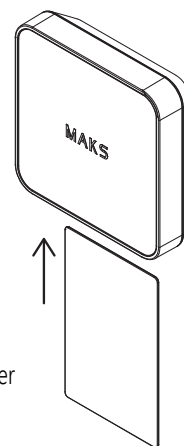
Carefully select the installation location of the MAKS Valve.

The device should not be placed:

1. Outdoors or in areas with unacceptable humidity and temperature
2. In places with a high level of radio interference
3. Near objects that can cause radio signal attenuation or shielding (metal, mirrors, etc.)
4. At a distance of less than 1 m from the security center

### Device installation

1. Use a plastic card to remove the device from the plate
2. Insert the card into the slot
3. Press the fixation elements down with the card
4. Move the MAKS Valve upwards
5. Remove the MAKS Valve from the mount
6. Fit the mount using the screws and wall plugs provided.
7. Place the device on the bracket and slide it down to fix the bottom and top parts and lock the tamper contact **5**. Flashes on indicator **2** will confirm that the tamper is locked in place.



### Battery replacement

1. Use a plastic card to remove the device from the mount
2. Pull out and replace the batteries
3. Place the device on the bracket and slide it down until it locks

### Connecting the actuated valve

Connect the actuated valve to the connector terminals as shown.

